

SKU : 133620

The KMT M series features a solid construction and is of high quality. These modern plate shears are equipped with a powerful drive motor, and a straight cutter angle ensures minimum workpiece torsion during cutting. The high-precision back gauge is positioned manually.

- Solid steel weldment with sliding block guide
- Cutters for stainless steel cutting are included
- Reversible cutters with multiple cutting surfaces
- Manual back gauge with travel display
- Work area secured by light curtain



TECHNICAL SPECS

WORKING AREA

| | |
|------------------------|-------------|
| Working length | 1360 mm |
| Cutting angle | 2 deg |
| Work table height | 810 mm |
| Work table depth | 390 mm |
| Number of support arms | 2 positions |
| Support arms | 450 mm |
| Strokes per minute | 35 H/min |

MEASURES AND WEIGHTS

| | |
|--|-------------------------|
| Overall dimensions (length x width x height) | 1.92 m x 2.1 m x 1.26 m |
| Weight | 1250 kg |

BACK GAUGE

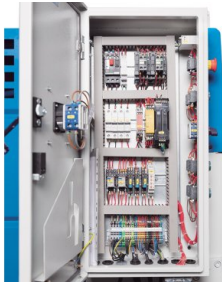
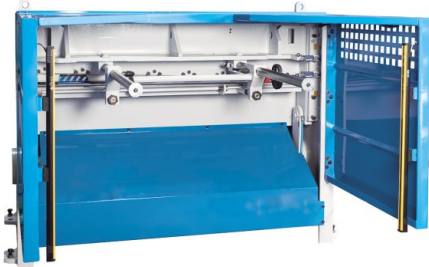
| | |
|-----------|--------|
| Rear stop | 750 mm |
|-----------|--------|

CUTTING CAPACITIES

| | |
|--|---------|
| Plate thickness (min.) - 450 N/mm ² | 0.25 mm |
| Plate thickness (max.) - 450 N/mm ² | 3 mm |
| Plate thickness(max.) - 700 N/mm ² | 1.5 mm |

DRIVE CAPACITY

| | |
|-------------------------|------|
| Motor rating main drive | 3 kW |
|-------------------------|------|



PRODUCT DETAILS

Machine Body and Drive System

- The machine frame is made of a very rigid, solid steel weldment and the cutter bar is sliding-block guided
- The high-precision guide ensures clean cuts and special cutters for machining stainless steel plates are included
- The upper cutters are reversible for use of both sides, and the lower cutters feature 4 cutting edges
- A rigid, continuous hold-down fixes the sheet metal plate right in front of the cut line

Material Support

- The rigid side angle stop simplifies alignment of the plate to the cut line
- Rugged support arms ensure a strong hold of large plates
- A wide support table simplifies workpiece handling

Ergonomic Design

- The bright LED illumination of the cut line creates a clearly visible shadow on the marked line
- Additionally, the smart machine enclosure design allows vertical view from the top for exact workpiece alignment
- An integrated cut counter keeps the user up to date
- All lubrication points and adjustment screws are easily accessible to simplify regular maintenance

Rear stop:

- The back gauge is positioned manually via a hand wheel
- An analog linear scale makes exact positioning easy and reduces down-times
- The easy accessible work area at the back gauge is secured by light curtain

Equipment

- The mobile foot switch gives the operator added flexibility and both hands are free for handling the workpiece
- High-quality electric components ensure reliable operation and maximum availability
- The full machine enclosure provides maximum safety, features a practical design and is precision machined

STANDARD EQUIPMENT

750 mm manual controlled backgauge
 Cutting unit counter
 Cutting line lightning & shadow illumination
 Finger protection cages
 Rear safety covers with photocell
 Bottomblade with 2 cutting sides+upper blade with 4 cutting sides
 Foot switch with emergency stop switch
 Squaring arm with T slot, stoper and ruler
 Front sheet holding arms (solid rectangular type)
 Operator instructions

OPTIONAL EQUIPMENT

- Backgauge NC control (750 mm BRL), SKU : 254189
- Backgauge NC control (1000 mm BRL), SKU : 254190
- 0-180°Angular Shearing Device, SKU : 254196
- Upgrade to Fuji controller, SKU : 254204



KNUTH on YouTube

Information to the point

On our YouTube channel you can find videos for nearly all machines from our program. We show the machines from current deliveries and you get an impression of the handling, the processing quality and the machining performance.

**Are you interested in a machine for which you cannot find a current video?
Please feel free to contact us!**