

Horizontal Mitre Cutting Bandsaws

ABS 350 C

SKU : 152758

The ABS 350 C is a robust fully automatic band saw designed for maximum reliability. The model impresses with high-quality components and a heavy, solid machine frame. The automatic feed via driven rollers in the clamping jaws enables continuous operation, perfect for single piece and series production. The angle cutting feature increases its versatility, allowing it to cover a wider range of applications.

- Vice with feed rollers
- Angle cutting possibility for increased versatility
- Facile operation via touchscreen
- Height adjustment with switch to speed up the cutting process
- Workpiece counter to facilitate continuous production
- Manual top vise for bundle cutting



TECHNICAL SPECS

CUTTING CAPACITIES

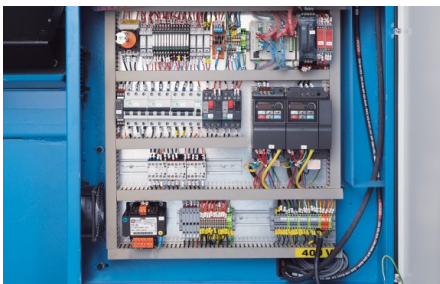
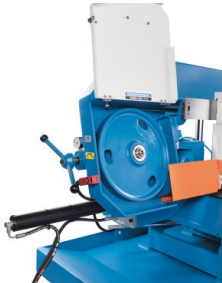
Cutting capacity 0° (round)	350 mm
Cutting capacity 0° (flat) (length x width)	400 mm x 350 mm
Cutting capacity 0° (square)	350 mm
Cutting capacity 30° (round)	320 mm
Cutting capacity 30° (flat) (length x width)	400 mm x 350 mm
Cutting capacity 30° (square)	320 mm
Cutting capacity 45° (round)	320 mm
Cutting capacity 45° (flat) (length x width)	290 mm x 300 mm
Cutting capacity 45° (square)	290 mm
Cutting speed	20 m/min - 100 m/min

MEASURES AND WEIGHTS

Blade dimensions	4160 mm x 34 mm x 1.1 mm
Overall dimensions (length x width x height)	2.45 m x 0.92 m x 2.02 m
Weight	1050 kg

DRIVE CAPACITY

Motor rating main drive	2.2 kW
Motor rating hydraulic pump	0.37 kW
Motor rating coolant pump	0.12 kW
Motor rating feed	0.25 kW



PRODUCT DETAILS

- The ABS 350 C is a fully automated horizontal miter band saw for series production of solid materials, tubes and profiles
- In the vise integrated rollers feed the material
- This efficient and cost-effective solution has a proven record, is very robust and provides precise cuts
- The saw frame features excellent stability and vibration-damping characteristics, and can be rotated manually up to 45°
- Very rigid adjustable carbide saw blade guide ensures high vertical angle accuracy
- Saw blade stroke and workpiece clamping are hydraulically driven
- Saw blade feed via micro-adjustable hydraulic valve
- Switches and controls are conveniently arranged on a stand-alone control panel
- The touchscreen allows for easy and convenient programming for fully automated operation
- A motor with infinitely variable speeds transmits power via a continuous-operation idler gear to the blade drive wheel
- The correct saw blade tension can be checked at the pressure gauge display
- An automatic band breakage control, a high-performance coolant system, and an effective chip brush complement the standard equipment package
- An additional roller conveyor and a Minimal Quantity Lubrication (MQL) system are available as options

STANDARD EQUIPMENT

Automatic band break control
 Bundle vise
 Coolant system
 Hydraulic part clamping
 Operating tools
 Saw-band
 Chip wiper
 Feed roller table 1,2 m
 Operator instructions

OPTIONAL EQUIPMENT

- 3 meter roller table for ABS 350 C, SKU : 253853
- Chip conveyor, SKU : 253892
- Hydraulic saw blade tensioning, SKU : 253895
- Micro spray cooling system, SKU : 253851
- Laser pointer, SKU : 253753
- Clamping force controlled at operator panel, SKU : 253899



KNUTH on YouTube

Information to the point

On our YouTube channel you can find videos for nearly all machines from our program. We show the machines from current deliveries and you get an impression of the handling, the processing quality and the machining performance.

**Are you interested in a machine for which you cannot find a current video?
Please feel free to contact us!**